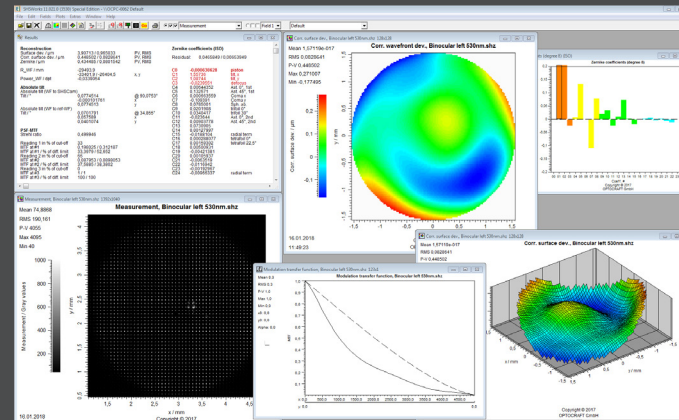


All you've ever wanted to know about your optics – captured by SHSInspect!

SHSWorks captures multiple properties of optics and optical systems – in just one single measurement.

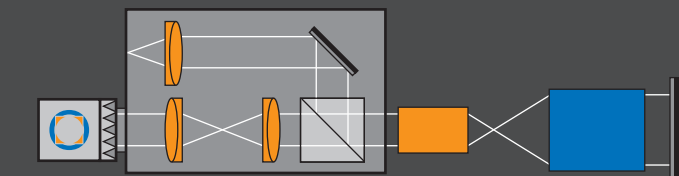
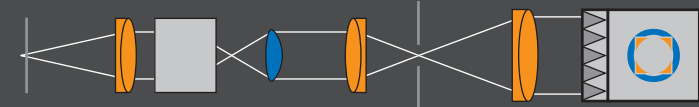
- Wavefront, Zernike, PSF, MTF
- On axis and off axis aberrations
- Chromatic aberrations
- Adjustment
- Surface shape, radius of curvature
- Additional VCC camera



Measurement configurations

1Xpass: single pass measurement

2Xpass: double pass measurement

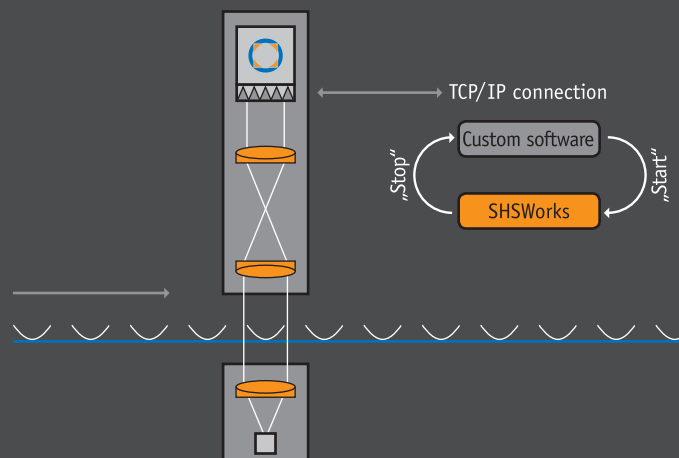


- Plano filters, lens elements, aspheres
- Calibration with golden master sample

- Lens assemblies, telescopes, binoculars
- Calibration with flats, spheres
- Finite and infinite conjugate

Automatic and automation functions

- Multifunctional systems with automatic processing
- Transmitted and reflected light configuration
- Modules for integration into automated manufacturing
- Fast, robust, reliable



Why Optocraft?

Optocraft has been developing and manufacturing Shack-Hartmann wavefront sensors since 2001. With decades of experience in optical metrology and design, we constantly push the limits of this technology. Our systems can be found all over the world and cover even the most demanding applications. Our customers enjoy our dedicated and reliable support.

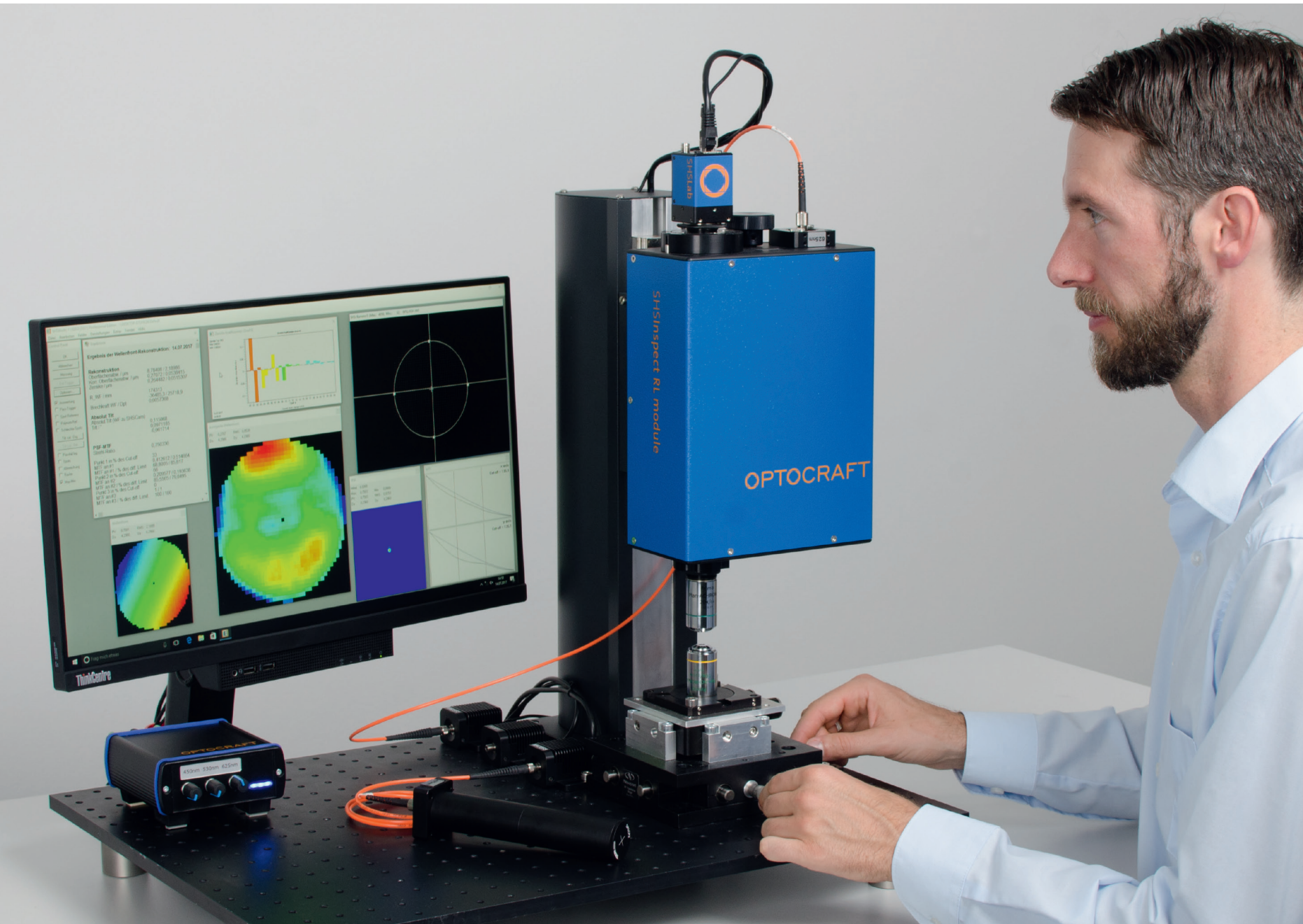
We love to be challenged - try us!

Contact us!

Tel. +49 9131 691500
sales@optocraft.com

Know your quality.
Optical metrology made by Optocraft

OPTOCRAFT GmbH · Am Weichselgarten 7 · D-91058 Erlangen

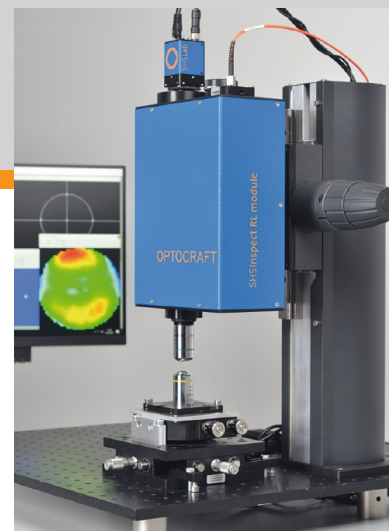
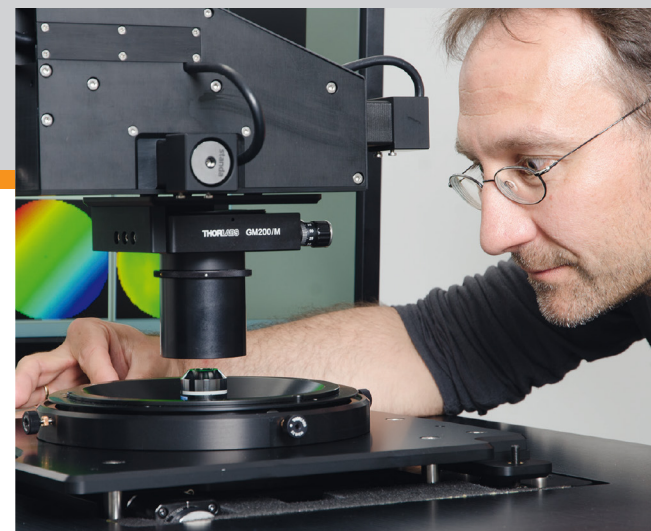


SHSInspect
Metrology solutions for optics

The SHSInspect applications

Optocraft's instruments are widely used in R&D and production when performance, reliability and efficiency counts most. Based on the state-of-the-art wavefront sensor SHSLab, Optocraft offers measurement modules, turnkey instruments and automated tools for a great variety of applications in the field of optics and optical systems.

Measurement of ...	SHSInspect		
	RL module	1Xpass	2Xpass
Optical elements Plano optics, filters, spheric and aspheric lens elements, mirrors, etc.	✓	✓	✓
Micro optics Micro optics down to a diameter of 0.05mm with high numerical aperture	✓	✓	
Optics for lasers and microscopy Objectives with low and high NA, air and immersion, high end and mass production	✓		✓
Optics for consumer devices R&D and quality control of lenses for mobile devices, camera lenses, etc.	✓	✓	✓
Astro optics and systems Telescopes, instruments, etc.	✓		
Optics in mass production Automated assembly, automated inspection, etc.	✓		



Turnkey solutions

Multifunctional test platform for testing objective lenses, plano windows, opticals elements and afocal optics.



SHSInspect 1Xpass

All-in-one instrument for testing single lenses, filters, etc.
High accuracy, fast

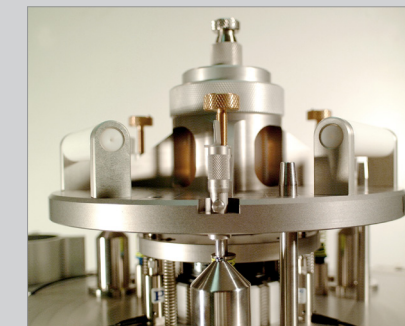
- Transmitted wavefront, Zernike, PSF, MTF



SHSInspect 2Xpass

All-in-one instrument for multifunctional measurements of lenses, objectives, etc.
High accuracy, automated measurement process

- Transmitted wavefront, Zernike, PSF, MTF
- On axis and off axis
- Chromatic aberrations
- Polarisation effects



Custom solutions

Customization of standard instruments and development of fully-customized solutions

- Machine integration
- Feasibility studies

"We depend on partners who develop and deliver customized innovative metrology solutions. This requires a high degree of creativity, know-how in physics and a maximum amount of flexibility. When facing demanding tasks, OPTOCRAFT fulfills these requirements with strong personal commitment and in a professional manner."

Thomas Thöniß, Qioptiq

Modules

Optical measurement modules for inline testing or integration into customer setups.

SHSInspect RL module

Optical measurement module for integration into customer set-ups, OEM, inline testing, etc.
High accuracy, flexible in application

- Transmitted Wavefront, Zernike, PSF, MTF
- Alignment, quality test
- Surface shape
- Chromatic effects



SHSInspect 1Xpass module

Wavefront measurement module for functional testing of optics in single pass configuration

- Transmitted Wavefront, Zernike, PSF, MTF
- Refractive power
- Lens diameter



Why SHSInspect?

- Single shot, high speed measurement based on Optocraft's state-of-the-art wavefront sensor technology
- Broad spectrum of applications: low demand on coherence allows for a wide range of light sources
- Robust and reliable: minimum requirements on the operating environment. Produces accurate results even when vibrations cannot be eliminated
- Stand-alone or integrated into manufacturing environments