



# More Precision

capa**NCDT** // Capacitive sensors for displacement, distance & gap



# Flexible solutions from standard to OEM

## capaNCDT

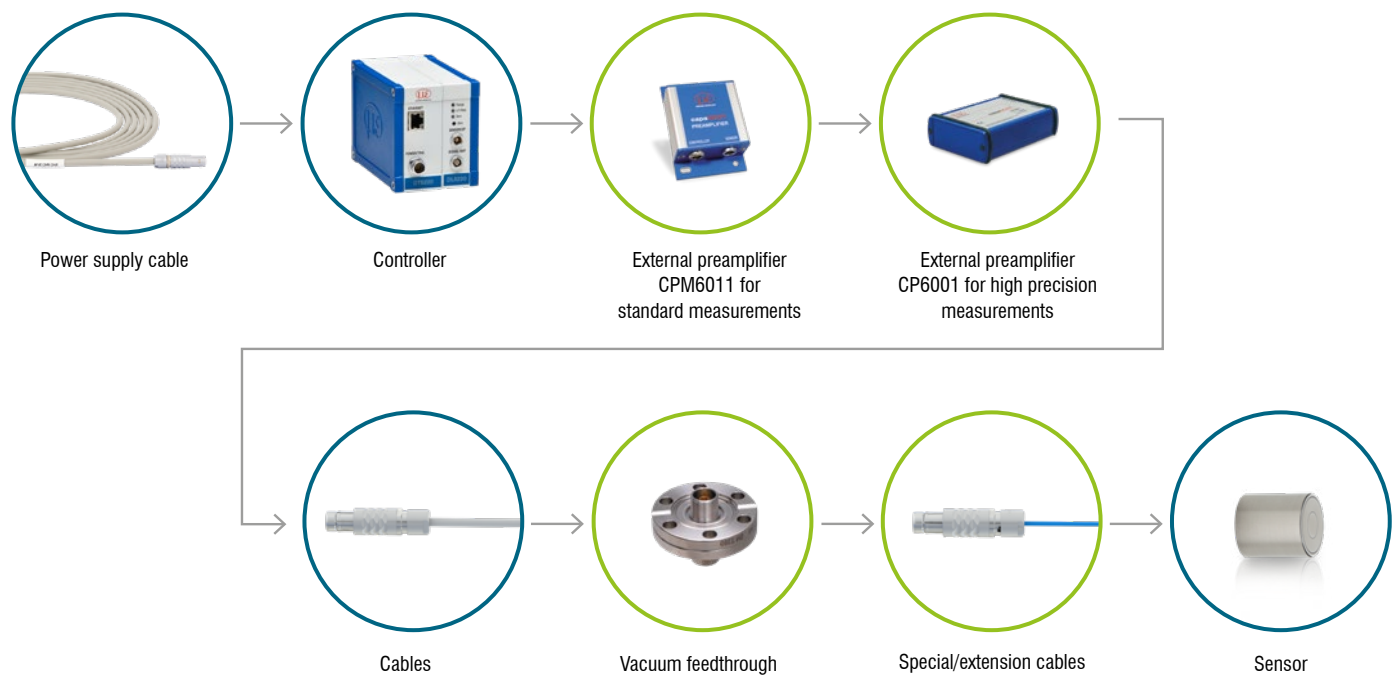
### Design and characteristics of capacitive measuring systems

Capacitive measuring systems from Micro-Epsilon consist of at least three components:

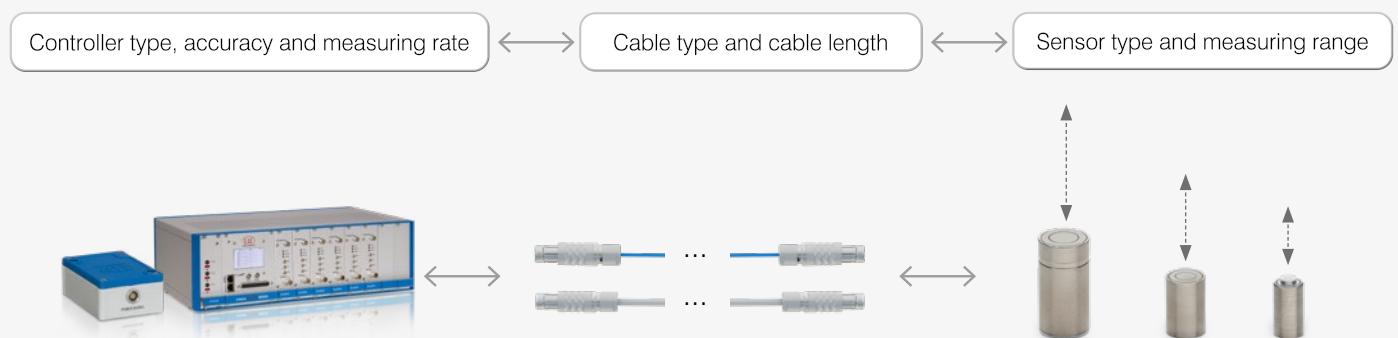
- Sensor with socket/sensor with integrated cable
- Sensor cable
- ▪ Controller (consisting of oscillator, microcontroller and demodulator)
- Connection cables

Depending on the measurement task, the following components are added:

- Preamplifier, e.g. for long cable routes
- Vacuum feedthrough
- ▪ Special/extension cables



The full compatibility of all system components enables numerous combinations:



## Specific sensors for OEM

When standard solutions reach their limits, we tailor our sensors and controllers to your specific requirements.

Frequently asked modifications include:

- Adapted design
- Target-specific adaptation
- Mounting options
- Individual cable lengths
- Modified measuring ranges
- Sensors with pre-installed controller
- Output types and interfaces

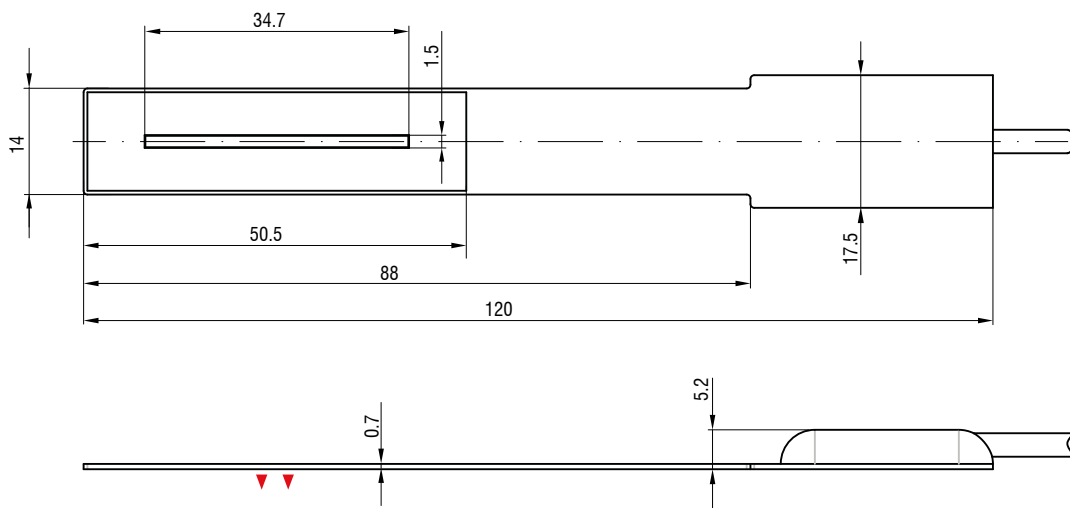


# Dimensions

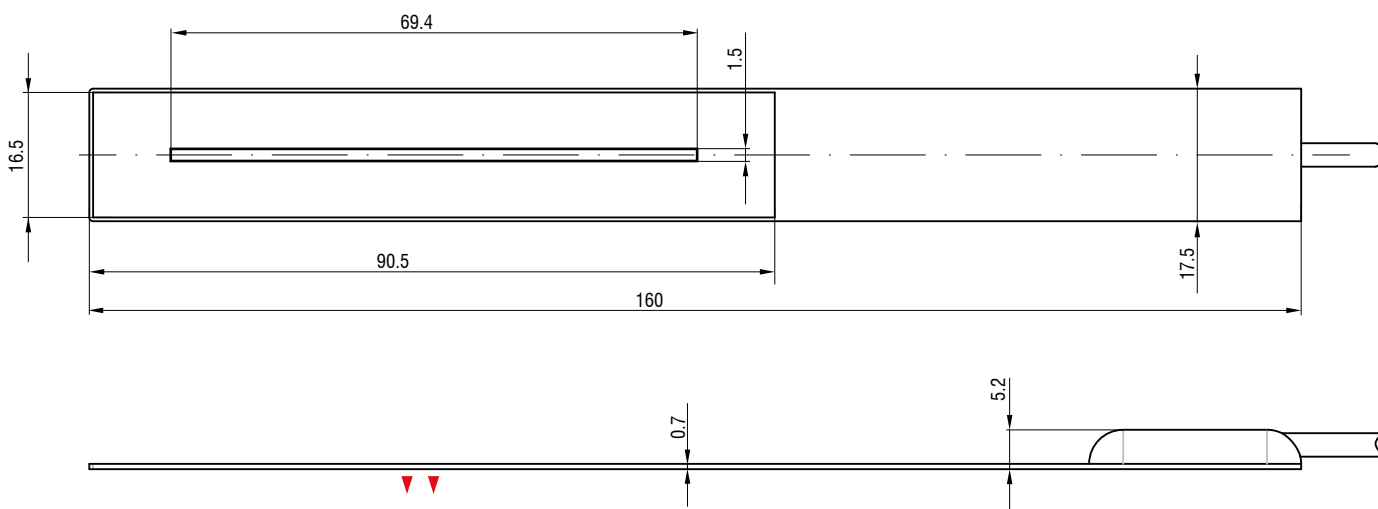
## capa<sup>NC</sup>DT CSF

Flat sensors with integrated sensor cable

CSF2-CRg4.0



CSF4-CRg4.0



CSF6-CRg4.0

